

ICut series cutting plotter

User's manual

2004-1-15
INK-EXPRESS

Thank you choose ICut cutting plotter.

Before you use your machine, we suggest you read this user's manual before.

When you have trouble in using cutting plotter, please switch the machine's power with off, look for the resolution in this user's manual; or contact the machine dealer, help you resolute the problem.

The model is:

ICut630 cutting plotter

ICut800 cutting plotter

ICut1120 cutting plotter

ICut1250 cutting plotter

.

ICut brand cutting plotter packed detail:

Goods	number
Cutting plotter	1 body
Knife holder	1pcs
User' s manual	1book
Power wire	1pcs
Ball-pen	1pcs
Ball-pen holder	1pcs
Knife	1packed/3pcs
Rs232 wire	1pcs
Printer port wire	1pcs
Plotter cloth	1pcs
Bracket	Included

CONTENS

1. Notice when you using your cutting plotter	(5)
2. Open packed and setup machine.....	(6)
2.1. Packed detail.....	(6)
2.2. Assistance goods packed include.....	(6)
3. Main parts and function.....	(7)
3.1. Font side/slide side.....	(7)
3.2. Keyboard panel.....	(7)
4. First examine of cutting plotter.....	(8)
4.1. Setup.....	(8)
4.2. Power on and offline examine.....	(8)
4.3. Connect to computer.....	(9)
5. Keyboard panel operating detail.....	(10)
5.1. “Working” states.....	(10)
5.2. “Online” states.....	(10)
5.2.1 Change speed.....	(11)
5.3. “Offline” states.....	(11)
5.4. Pause of cutting.....	(12)
5.5 “Setup” states.....	(12)
6. Cutting knife and plotting pen.....	(13)
6.1. Cutting knife holder.....	(13)
6.2. Plotting pen.....	(14)

6.3. Put the knife-holder or pen-holder in machine	(14)
7. Load media / load paper	(14)
7.1. Change roller wide because paper wide	(14)
7.2. Load media	(15)
8. Test cut	(15)
9. How to extension the knife using-life	(15)
10. Connect with computer	(15)
10.1. RS232 wire	(15)
10.2. LPT wire	(16)

1. Notice when you using your cutting plotter

Our cutting plotter's carrier have magnet, please don't put the little steel nearby it.

Please put down the power wire if you don't use machine for a long time.

Don't put down any wire when cutting plotter or computer is power on.

Live up the roller when the machine under working.

Cutting plotter's shell must connect ground with an electronic wire.

2 Open packed and setup machine

2-1 packed detail

When you open the packed, check the goods is no missing, every packed must include:

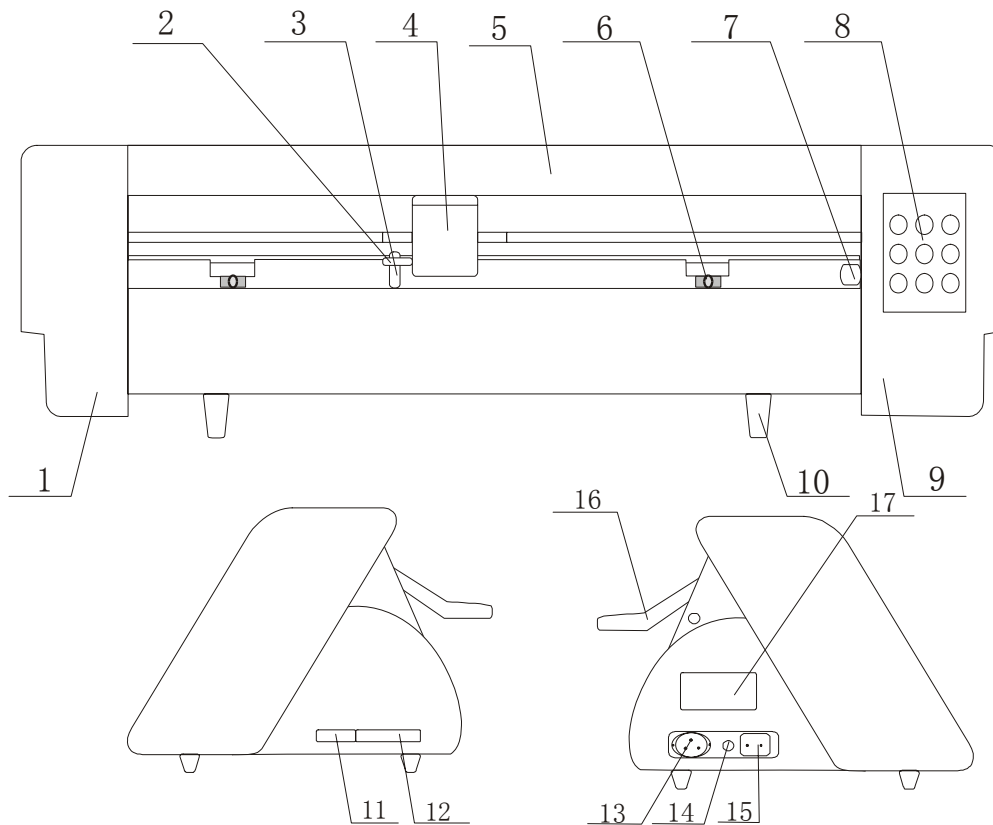
1. Cutting plotter body 1 piece
2. Other assistance goods 1 packed

2-2 Assistance goods packed include:

Order	Name	Quantity
1	Power wire	1 piece
2	User's manual	1 book
3	Cutting knife holder	1 piece
4	Cutting knife	3pcs/1packed
5	Plotter pen holder	1 piece
6	Core of ball pen	1 piece
7	Wire of RS232	1 piece
8	Wire of printer port	1 piece
9	Fix machine record card	1 paper

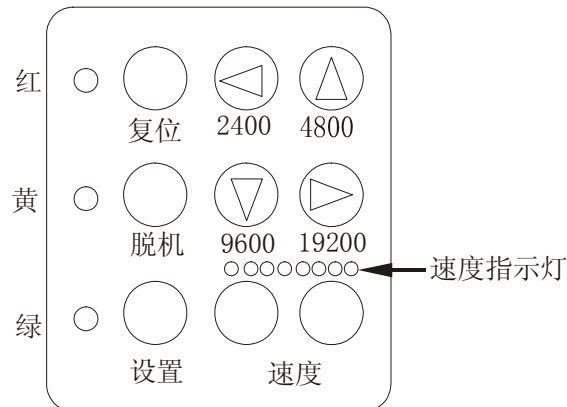
3.Main parts and function

3-1 Front side/slide side



- 1.left shell 2.seat of cutting knife holder 3. cutting knife holder
4.carriage 5.protection of track 6.roller 7.swith of force
8.keybord panel 9.right shell 10.machine's foot 11.LPT port
12.RS232 port 13.AC power outlet 14.safe 15.power switch
16.control the roller up or down 17.machine's stick

3-2 keyboard panel



4. First power on, examine machine

4-1 install machine

Put the machine on a level table, install machine's blanket, to keep machine very level. Make enough space in front of machine and back of machine. No shake when machine is running. Put the machine in cleaning room.

Suggest you connect the machine's metals shell to ground with a metals wire. To protect Static electricity.

4-2 switch the power on, examining machine in offline states.

Set the power wire to machine power outlet, connect the power wire to power supply. Switch the power on, the red LED on keyboard is light when power on, later the yellow LED and green LED on keyboard will flash one times;

When you switch the power on, the seat of cutting knife holder will lift 1.5–2mm. press one of four arrows key, the seat of cutting knife holder fall.

Press “online/offline” key, the yellow LED is light, now is offline states, you can move the carriage to every where you want to go, later must press “origin” key confirm .

Machine test: On offline states, you can press “up”+ “down” key, cutting plotter will cutting a design himself.

4-3 Connect to computer

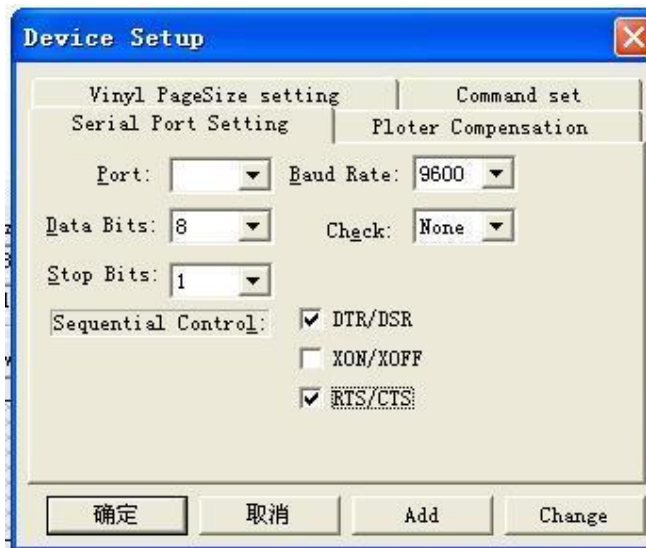
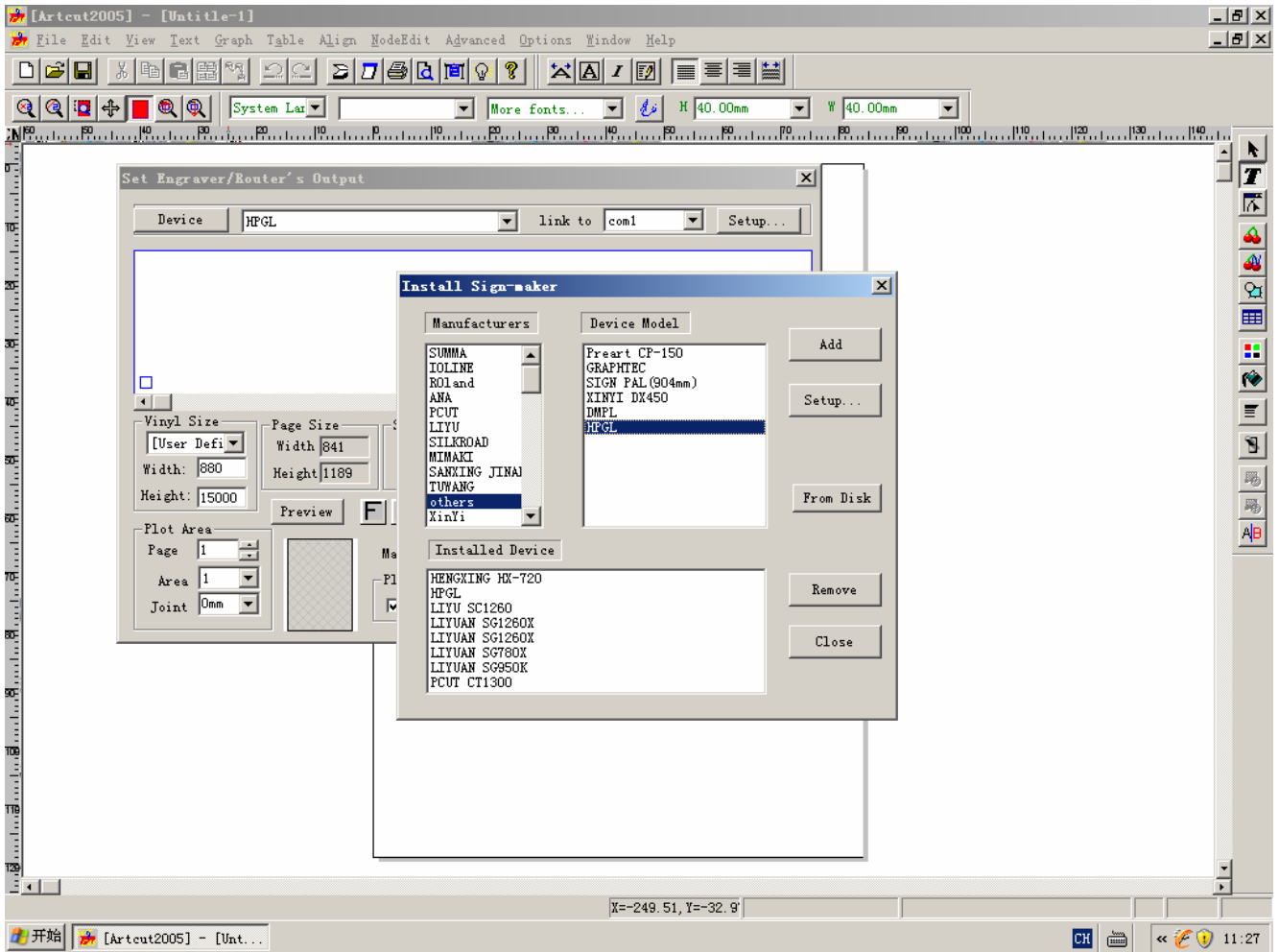
You can choose the computer ports (com1,com2,com3 or com4) or printer ports (LPT1,LPT2). But can choose only one ports at each one times.

Our factory suggest user choose RS232 port.

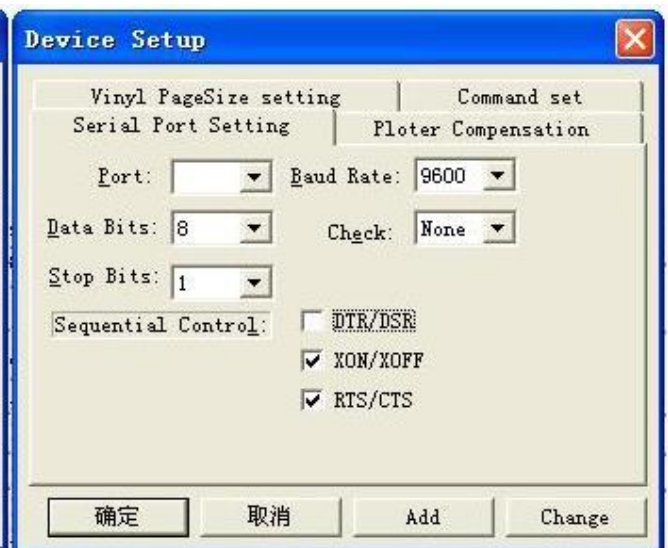
Switch the computer’ s power to off, Connect one side of the RS232 wire to computer RS232 port, other side connect to cutting plotter.

A. Switch the computer’ s power to ON, switch the cutting plotter’ s power to ON.

B. Run the ArtCut software, add the device model as HPGL at the manufacturers “ others” (1120,1250mm model) ; LIYUAN SG630B (630,780mm model) and change the sequential Control as the picture below:



WIN98 select 1, 3



WINXP select 2, 3

5. keyboard operating detail

5-1. Cutting plotter working states

Cutting plotter have three working states: ONLINE states, OFFLINE states and SETUP states.

5-2. Online states

When you switch the cutting plotter' s power to ON, after one minute examine. On the keyboard only the RESET LED is light, we call this states is ONLINE states, only in ONLINE states, cutting plotter can receive the order from computer.

In the other states, you can press RESET key to running ONLINE states.

In the ONLINE states, the machine parameter:

Brand rate:9600

Speed: 200mm/s

Pressure: 150g

Origin: machine' s origin is same than computer files origin

Buffer: buffer is clearing

5-2-1. Change speed

In the ONLINE states, if you want machine work speed is quick, you can press “ up” key; if you want slowly you can press “ down” key.

Remark: if you cutting the design is big, you can select quick or slowly; if you cutting the design is small , you need slowly. Because slowly will cut very accuracy.

5-2-2. Change pressure

In the ONLINE states, if you want machine work pressure is heavy, you can press “ left” key; if you want slight you can press “ right” key.

Remark1: if you cutting paper is thick, you can select heavy; if you cutting paper is thin , you need slight, thinner with slighter .

Remark2:The knife is old, you can set the pressure to heavy, if you use new knife you must change the pressure very slight. Because heavy pressure cause the knife very easy to break.

5-3. Offline states

In ONLINE states or machine is cutting, you can press “ ONLINE/OFFLINE” key, then the “ ONLINE/OFFLINE” yellow LED is light, this state we called OFFLINE states.

In OFFLINE states, we can operation:

- A. Press “ ↑ up” key , the paper will rolling to front.
- B. Press “ ↓ down” key, the paper will rolling to back.

- C. Press “ ←left” key , the carriage move to left.
- D. Press “ →right” key , the carriage move to right.
- E. Press “ ↑up” + “ ↓down” one time, machine will test cut, after test cut cutting plotter will switch to ONLINE states automatic.
- F. In the OFFLINE states, you can press “ ONLINE/OFFLINE” key change to ONLINE states. The yellow LED will off.

5-4. Pause of cutting

When the cutting plotter is cutting, you can press “ ONLINE/OFFLINE” key , pause the cutting work. after pause cutting, if you want continue , press “ ONLINE/OFFLINE” key, the cutting will continue, otherwise you want cancel the cutting, press “ RESET” key.

5-5. Setup states

In ONLINE states or machine is cutting, you can press “ SETUP” key, then the “ SETUP” green LED is light, this state we called SETUP states.

In SETUP states, we can operation: change band rate. User needn’ t use this function.

6.Cutting knife and plotting pen

6-1.cutting knife holder

On the working states, the knife can rotate in holder very smooth, first time you can set the knife into bottom of holder, and press the top of knife to confirm the bottom of knife is touch the holder' s bottom, later close the CLOSE SCREW to limit the knife not fall out, the knife peep out of the holder less than 0.5mm.

When you change the knife, pine the close screw, take out the old knife, change a new one, keep the knife peep out of the holder less than 0.5mm, later close the close screw, OK!

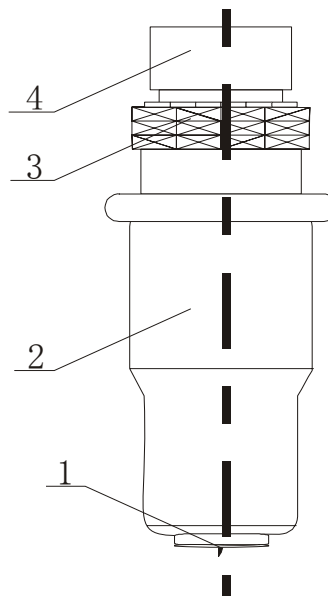
NOTICE: you must operating protect you finger is safe.

1.knife

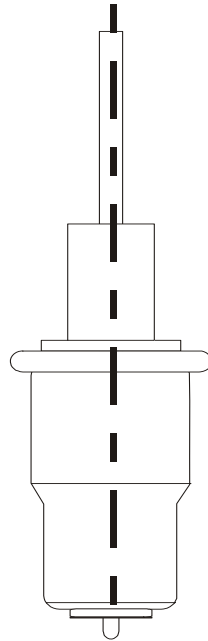
2.holder' s shell

3.close screw

4.holder' s inside-shell



6-2. Piloting pen



6-3 set the knife holder or pen holder on holder seat

- A. Switch the power to off
- B. Set the knife holder or pen holder on holder' s seat, close the screw of seat of holder.
- C. Switch the power to on, the holder will lift 1-2mm.

7. Load media/ Load paper

7-1. Change the roller wide because paper wide

When you move the roller, you must list the roller control first. Right roller will not move usually.

7-2 Load media /load paper

Lift the roller control, the roller will lift 1–2mm, then you can load your media.

8. Test cut

In the OFFLINE STATES, press “ up” + “ down” key one time, the machine will test cut, like this design.

9. How to extension the knife using-life

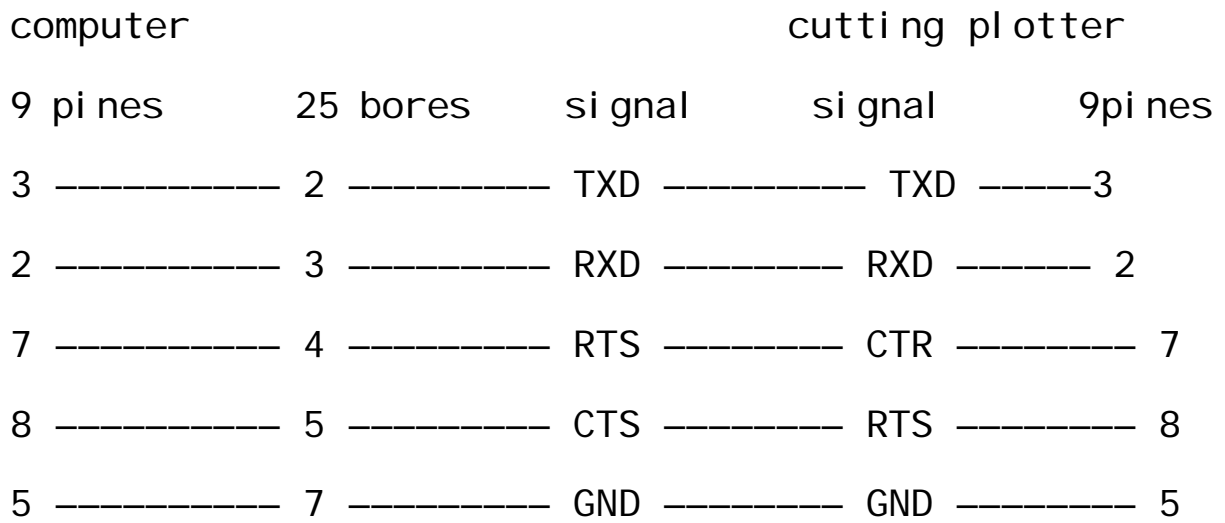
- A. Keep the knife peep out of the holder less than 0.5mm, little peep out can extension knife using-life.
- B. Pressure bigger, knife using-life will shorter.
- C. Deferent media deferent knife using-life.
- D. When the knife is not very sharp, you can rub it on a rubber, can extension the knife using-life.

10. Connect to your computer (user need't study)

10-1. RS232 wire

Model	TXD	RXD	RTS	CTS	DSR	GND	DCD	DTR	R1
25 pins	2	3	4	5	6	7	8	20	22
9 pins	3	2	7	8	6	5	1	4	9

Deferent computer system, will have deferent list, for example:



10-2. LPT wi re

Setup list	DC	D1	D2	D3	D4	D5	D6	D7	ACK	BUSY	STB	AFED	PE	GND
Pin/bor	2	3	4	5	6	7	8	9	10	11	1	14	12	18-25